

## RANCHER BODY OPTIONS



### DROP IN SIDES

6½" extruded aluminum drop in sides welded .160 hat sections.



### CHAMFERED CORNERS

Chamfered rear and front corners.



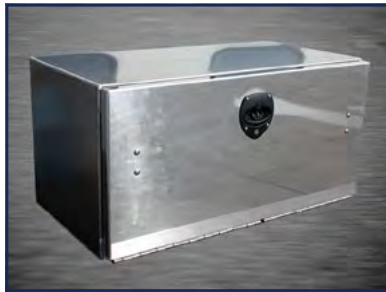
### LADDER RACKS

2"x2" extruded goal post and over cab ladder racks.



### CONTRACTOR SIDES

12" formed sides and tailgate with quick release.



### TOOL BOXES

Custom sizes to fit any application.



### WOOD FLOOR

2" x 8" #1 dense pressure treated tongue and groove yellow pine with Wolmanized® extra.



### REAR HITCH OPTIONS

Included 30,000 lbs. gooseneck ball. Optional B&W turn over and 5th wheel companion hitch.



### MIRROR & PAINTED FINISHES

Available in various colors.



**45% LIGHTER THAN STEEL**  
**12% FUEL SAVINGS**

\*up to 12%



016 Future Line Manufacturing



# RANCHER BODIES

For questions or to place an order, contact  
**HAWKEYE TRUCK EQUIPMENT**  
515-289-1755 or 1-800-622-8223



**TOUGH YET LIGHT / SAVE FUEL\* / DESIGNED TO LAST**

up to 12%



### STANDARD FEATURES

- 6" x 4" Extruded Rub Rail, 3" x 3/8" Tie Rail with 2" x 4" Stake Pockets on 24" Centers
- Bolt on 5th Wheel Hitch with 25,000 lbs. Ball
- Boxed 1 3/4" Extruded Aluminum Crossmemberless Floor with Smooth Bottom
- 1/8" Tapered Bulkhead with Screen Window, 2" x 3" Extruded Tube Frame and Integrated Stop, Tail, Turn and Backup Lights
- 6" Extruded Long Sills (9'4" and 11'4")
- 4" Extruded Long Sills (7'4" and 8'6")
- Recessed Cast Aluminum Compartment with Cover for Gooseneck Hitch
- 1/8" Smooth Aluminum Rear Apron with L.E.D. Stop, Tail, Turn Lights and Backup
- L.E.D. Marker Light per FMVSS-108 Standards

### ADDITIONAL INFORMATION

MODEL	LENGTH	WIDTH	CA	LONG RAIL SPACING
ARØ7844	7' 4"	84"	42"	37"
ARØ7964	7' 4"	96"	42"	37"
ARØ71Ø24	7' 4"	102"	42"	37"
ARØ8844	8' 6"	84"	56"	37"
ARØ8964	8' 6"	96"	56"	37"
ARØ81Ø24	8' 6"	102"	56"	37"
ARØ9966	9' 4"	96"	60"	34"
ARØ91Ø26	9' 4"	102"	60"	34"
AR11966	11' 4"	96"	84"	34"
AR111Ø26	11' 4"	102"	84"	34"

For questions or to place an order, contact  
**HAWKEYE TRUCK EQUIPMENT**  
 515-289-1755 or 1-800-622-8223



### STANDARD FEATURES

- 6" x 4" Extruded Rub Rail, 3" x 3/8" Tie Rail with 2" x 4" Stake Pockets on 24" Centers
- 1/8" Aluminum fender with Cast Fender Flair
- Boxed 1 3/4" Extruded Aluminum Crossmemberless Floor with Smooth Bottom
- Tool Boxes Standard with Drop Down Lid, Optional Side Open
- 6" Extruded Long Sills (9'4" and 11'4")
- 4" Extruded Long Sills (7'4" and 8'6")
- Bolt on 5th Wheel Hitch with 25,000 lbs. Ball
- 1/8" Tapered Bulkhead with Screen Window, 2"x3" Extruded Tube Frame and Integrated T, T, S and Backup Lights
- 1/8" Smooth Aluminum Rear Apron with L.E.D. Stop, Tail, Turn Lights and Backup
- Recessed Cast Aluminum Compartment with Cover for Gooseneck Hitch
- (4) 1/8" Aluminum 18" Deep by 18" Height (9'4 and 11'4") or (4) 1/8" Aluminum 12" Deep by 18" Height (7'4"and 8'6")
- L.E.D. Marker Light per FMVSS – 108 Standards

### ADDITIONAL INFORMATION

MODEL	LENGTH	WIDTH	CA	LONG RAIL SPACING
ARSØ7844	7' 4"	84"	42"	37"
ARSØ71ØØ4	7' 4"	102"	42"	37"
ARSØ88446	8' 6"	84"	56"	37"
ARSØ81ØØ6	8' 6"	100"	56"	37"
ARSØ91ØØ6	9' 4"	100"	60"	34"
ARS111ØØ6	11' 4"	100"	84"	34"