

General Bodies

The low profile, all-purpose bodies

For questions or to place an order, contact
HAWKEYE TRUCK EQUIPMENT at
 515-289-1755 or 1-800-622-8223.



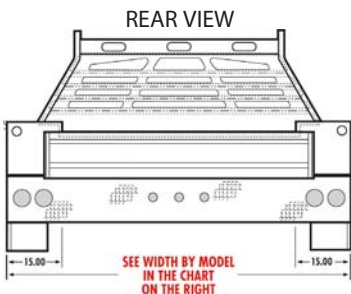
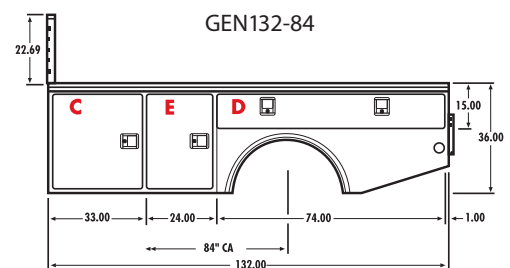
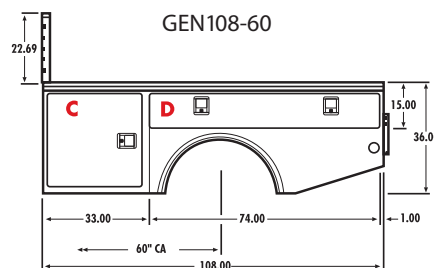
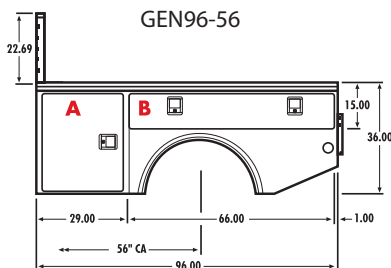
Omaha Standard PALFINGER General body is the right choice for a wide range of applications. It's ideal for the hauling needs of contractors, electricians, roofers, plumbers, concrete finishers and lawn irrigation companies to name just a few. The General is specifically designed for single or dual-wheel chassis and the low profile gives the driver an unobstructed view to the rear making it perfect for towing operations, including gooseneck and fifth-wheel trailers. The General's wide floor is ideal for hauling all types of loads: drywall, pipes, scaffolding, etc. Options such as ladder racks and a full-length, underbody, "possum belly" storage compartment are available.

Body and Bulkhead

- 3-yr./36,000 mile limited warranty.
- 4" structural channel long members (6" optional).
- 4-3/16" heavy channel cross members.
- 1/8" treadplate steel floor and reinforced rear apron.
- Heavy-duty, contoured rectangular tube, single piece bulkhead. Stylish laser-profiled window is standard.
- Attractive, automotive-style steel fender skirt.
- Body is completely electrocoated with a light gray epoxy e-coat primer for maximum durability and rust resistance.
- Stainless steel rotary latch pickup style slam tailgate.
- FMVSS compliant clearance lights and reflectors.
- Wiring in loom harness.

Storage Compartments

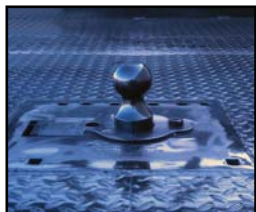
- Four large capacity storage compartments on the 96" and 108" models; six compartments on the 132".
- All A-60 two-sided galvanized steel construction.
- Double-panel doors with rigid, steel stiffeners bonded between panels for maximum strength.
- Exclusive all stainless steel interior mounted door hinges for greater security and ease of replacement.
- Spring-loaded over-center door retainers on all full size vertical doors.
- Stainless steel automotive rotary paddle latches combined with adjustable striker for positive door closure.
- Door latches are bolted, not welded or riveted.
- Full perimeter uninterrupted automotive neoprene bulb door seals.



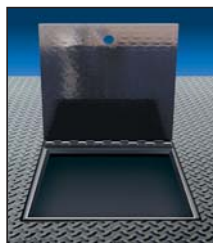
Clear Door Openings	
A	23-3/4" W x 30" H
B	63-3/4" W x 10" H
C	27-3/4" W x 30" H
D	71-3/4" W x 10" H
E	19-3/4" W x 30" H

Model	Length	Width	C.A.	Weight*	Application
GEN 96-56SW	8'	78"	56"	1136	Single Wheel
GEN 96-56DW	8'	96"	56"	1196	Dual Wheel
GEN 108-60SW	9'	78"	60"	1278	Single Wheel
GEN 108-60DW	9'	96"	60"	1364	Dual Wheel
GEN 132-84DW	11'	96"	84"	1693	Dual Wheel

Optional equipment available for Badger and General Bodies



Retractable ball hitch for quick hook ups.



Gooseneck style hinged door, flush mounted. 8" structural channel drawbar included.

Manufacturing



From the company's beginning in the 1920's through the 1960's, Omaha Body Company made a variety of products including: spark plugs, aircraft components, later transitioning to center dump gravel trailers, delivery vans, moving vans, dump bodies, flatbed trailers, and farm bodies.

In 2006 all production was centralized in a state-of-the-art 210,000 sq. ft. facility, including an in-house e-coat system.

Omaha Standard was acquired by PALFINGER AG October 31, 2008. After the acquisition by PALFINGER AG, OSP introduced a

complete line of mechanics service bodies, telescopic cranes and hydraulically driven air compressors.

Omaha Standard PALFINGER is a proud member of the PALFINGER North America Group.

12 step paint process provides the ultimate rust resistance & is environmentally friendly!



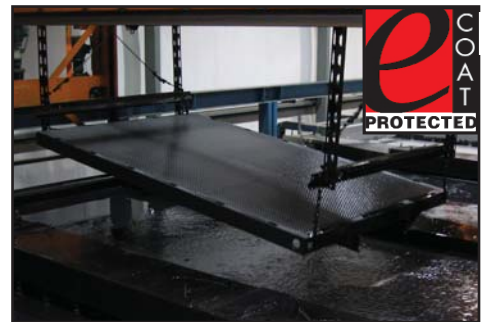
Cleaned and pretreated with a phosphate conversion coating to prepare the product for electrocoating.

Dipped into a paint bath where direct current is applied between the products and a counter electrode. Paint is attracted by the electric field to the product and is deposited onto the product.



Removed from the bath and rinsed to reclaim undeposited paint solids.

E-coat is environmentally-friendly, recyclable, and economical with the paint applied to a precise thickness over the entire product so no paint is wasted. Then transferred to the bake oven and completely cured at a temperature of 375°.



Omaha Standard PALFINGER E-coat completely covers the products to make them durable and corrosion resistant.

"Green" initiatives are encompassed in all aspects of PALFINGER North America Group company activities, from manufacturing, procurement, including new product development.

