

**HM & HH DUMP BODIES**



**HAWKEYE TRUCK EQUIPMENT**  
515-289-1755 or 1-800-622-8223

**Durability that Means Business**

# HM



# HH



## DuraClass Design:

All premium DuraClass **HM & HH** dump bodies feature an innovative design incorporating maximum durability and useability. Note the fully enclosed front posts for added strength and superior resistance to corrosion. Rear corner posts are full depth, which helps keep body dimensions true and rigid. High tensile steel provides superior strength and lighter body weight than comparable dump bodies.

**HM:** Utilize a stacked understructure with structural channel 4" crossmembers and 6" I-beam longmembers for additional strength and rigidity. A six-panel tailgate and vertical side braces complement the sturdy, traditional design.

**HH:** For your toughest loads, meet your needs with DuraClass HH. A stacked understructure of 4" I-beam crossmembers and 6" I-beam longmembers give you the maximum floor support. Six-panel tailgate and vertical side braces are standard on this rough and ready body.

### HM & HH STANDARD OPTIONS

- **HM:** 3/16" or 1/4" AR in lieu of 8 ga
- **HH:** 3/16" or 1/4" AR in lieu of 8 ga
- Cabshields:
  - 1/4, 1/2 and full
  - Wind Deflector for Tarp Available for All Sizes
- Side Braces - Vertical or One Horizontal Side Brace
- 6-Panel Straight Tailgate Assembly Standard
- Straight Tailgates
- 8", 10" or 12" Spill Apron
- Sloped Sides

### ADDITIONAL BODY OPTIONS

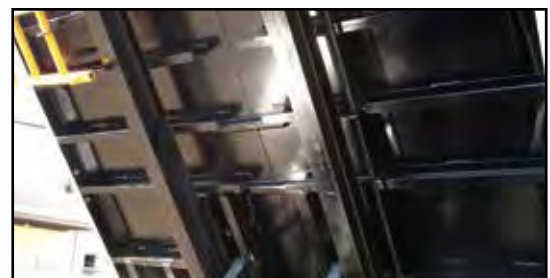
- Crossmemberless understructure
- Aluminum (Cab Shields & Tailgates Only)
- Quick Release Upper Tailgate Pins
- Side Swing Tailgate (36" minimum)
- Body Side Steps and Handles
- Tarp Rails and Walk Rails
- Variety of Sliding Door Options
- Custom Side and Tailgate Heights
- Custom Body Bracing
- Air Operated Hoist Controls
- Custom Tailgates

### PREMIUM STEEL CONSTRUCTION

All DuraClass HM & HH dump bodies have Hi-Tensile, minimum 45,000 psi steel. Additional steel and stainless steel options are available.

### HM & HH DUTY DUMP BODY SPECIFICATIONS

Model Name	HM	HH	HH
Inside Length	10'	10'	10'
Width	7'	7'	7'
Body Capacity, yards	5-7	5-7	6-8
Material	8 ga	8 ga	8 ga
Side/Front/Rear Height, inches	24/34/34	24/34/34	28/38/38
Hoist Model	1821	1821	1821
Weight (Includes Hoist), lbs	3845	3909	4032



HH stacked understructure is tough and durable.

All bodies shown with some optional equipment. Models and options are subject to change without notice.



For questions or to place an order, contact  
**HAWKEYE TRUCK EQUIPMENT**  
515-289-1755 or 1-800-622-8223